

15th Nov 2025 - ENFIELD Webinar 2024

morganphil@cardiff.ac.uk

CARDIFF UNIVERSITY

PRIFYSGOL CAERDYDD

How to Build Trust in AI: Human-Centered Design of Trusted AI Smart Agents for Collective Intelligence

Prof Phil Morgan: Human Factors & Cognitive Science

School of Psychology, Cardiff University, UK

morganphil@cardiff.ac.uk

[AI for Collective Intelligence \(AI4CI\) |](#)

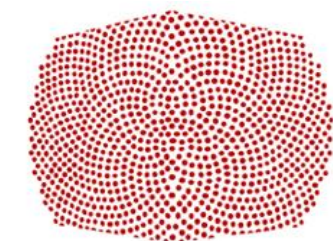
Co-Director – Human Factors Excellence Research Group (HuFEx)

Director of Research – Centre for AI, Robotics, & Human-Machine Systems (IROHMS)

Transportation Lead: CU Digital Transformation Innovation Institute (DTII)

Director – Airbus Centre of Excellence in Human-Centric Cyber Security & Co-Director (H2CS) & Cardiff University Partnership

Guest Professor – Luleå University of Technology; University of Canberra, Australia



School of Psychology



Human Factors Excellence Research Group

HuFEX

Augmented & Assistive Systems
Cyberpsychology
Defence & Security
Emergency Services & Healthcare
Humans in AI & Automation
Transportation Human Factors

14 staff (HF, cog sci, social cog, neuroscience)

12 PhD students (AI, automation, cyber security, defence,
emergency services, HRI, transport)

~£15m (30+ grants 2017+); ~£40m grants under review;
Phil Morgan ~£40m (50+ grants).

IROHMS

Human-like AI

- Affective computing
- Augmented cognition
- Computational semantics
- Contextual reasoning

Ethical and Explainable AI

- Ethical AI
- Explainable AI
- Explainable robotics
- Trusted autonomy

Human-centred Technologies and Society

- Human-centred computing
- Human-centred cyber security
- Emerging technology and society

Humans and Robots

- Human-centred robotics
- Social robotics
- Robot perception/learning

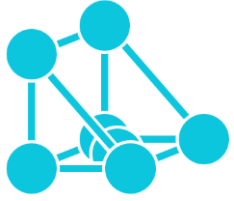


AI4CI



AI for Collective Intelligence





AI4CI Management Team



**Vicky
Walter**
Hub
Manager



**Lauren
Clarke**
Partnership
Manager



**Amy
Ardon**
Hub
Administrator



**Nirav
Ajmeri**
Deputy
Director



**Cangxiong
Chen**
ECR Lead

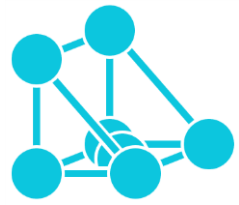


**Seth
Bullock**
Hub
Director

(Intelligent Agents)

(Machine Learning)

(Simulation Modelling)



AI4CI Investigators



Maggie Chen
(Cardiff)
Theme Lead
Finance



Phil Morgan
(Cardiff)
Theme Lead
Design



Michaela Black
(Ulster)
Theme Lead
Governance



Joan Condell
(Ulster)
Theme Lead
Governance



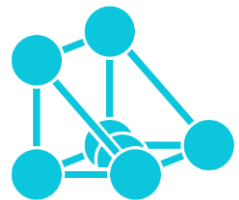
Hywel Williams
(Exeter)
Theme Lead
Environment



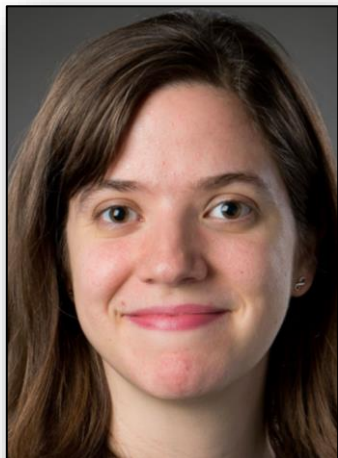
Alison
Heppenstall
(Glasgow)
Theme Lead
Smart Cities



Adam Dennett
(UCL)
Theme Lead
Smart Cities



AI4CI Investigators



Theresa Smith
(Bath)
Theme Lead
Healthcare



Cangxiong Chen
(Bath)
ECR
Lead



Laura Smith
(Bath)
Theme Lead
Design



Nirav Ajmeri
(Bristol)
Deputy
Director



Aisling O'Kane
(Bristol)
Theme Lead
Healthcare



John Cartlidge
(Bristol)
Theme Lead
Finance



Lenon Danon
(Bristol)
Theme Lead
Pandemics



The Wider UK AI Ecosystem

UNIVERSITY OF BATH University of BRISTOL CARDIFF UNIVERSITY UNIVERSITY OF EXETER GW4

ISAMBARD-AI

New AI supercomputer to drive critical research and innovation

Northumbria University NEWCASTLE

MANCHESTER 1824

Imperial College London

AI

University of BRISTOL

CARDIFF UNIVERSITY PRIFYSGOL CAERDYDD

UNIVERSITY OF OXFORD



 Cabinet Office

 Office for Artificial Intelligence

The Alan Turing Institute



FOUNDATION MODEL TASKFORCE



NetZero



GALLANT

Ada Lovelace Institute

Our EPSRC AI4CI Hub (~£12m UK, 5-Years)

Director: **Seth Bullock**
Deputy Director: **Nirav Ajmeri**
ECR Lead: **Cangxiong Chen**

Laura Smith (Bath)
Phil Morgan (Cardiff)
Human-Centred Design

External Advisory Board
Science Council

A. Heppenstall (Glasgow)
Adam Dennett (UCL)
AI for Smart City Design
With: Arup, UK Govt. ...

Michaela Black (Ulster)
Infrastructure & Governance

John Cartlidge (Bristol)
Maggie Chen (Cardiff)
AI for Financial Stability
With: HSBC, Coinbase...

Leon Danon (Bristol)
AI for Pandemic Resilience
With: Pfizer, DHSC, NHS,
Sanofi, Cabinet Office

AI4CI CORE

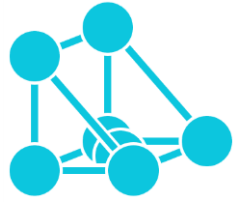
Community & Capacity
Cross-Cutting AI/ML
EDI Team
Engagement Team

Aisling O’Kane (Bristol)
Theresa Smith (Bath)
Joan Condell (Ulster)
AI for Health Ecosystems
With: NHS, Mayden

Academic Pool: 50+ AI/ML
co-supervisors from across
six AI4CI partner institutions.

Hywel Williams (Exeter)
Environmental Intelligence
With: Wikipedia, PML,
Met Office, IBM

AI4CI Hub



What Will Our Hub Do?

Collective
Behaviour

Swarm
Intelligence

Complex
Systems

Organisational
Behaviour

*AI for Collective
Intelligence*

Collective
Dynamics

Economics

*(Behavior Change at
Scale)*

Robotics

Cognitive
Psychology

Social
Psychology

AI

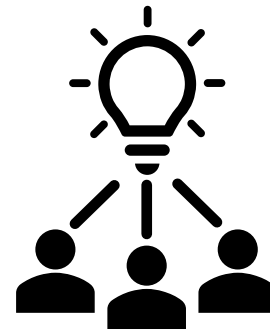
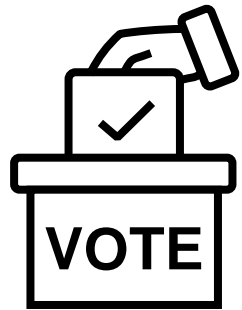
Animal
Behaviour

Multi-Agent
Systems



AI4CI Vision

Collective Intelligence: Pool diverse experiences for centralised decision support.

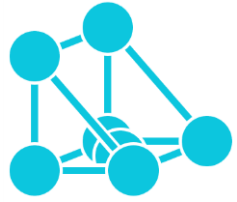


 **Dataminr**[®]

 **citizenlab**

 **FACTMATA**





AI4CI Vision

AI For Collective Intelligence – the loop:

1. Design Smart Agents with end-users in mind – key focus on trust

2. 'Speaking' to the Smart Agents with end-users in mind

The AI4CI Loop

Gather Intelligence

ML Analytics

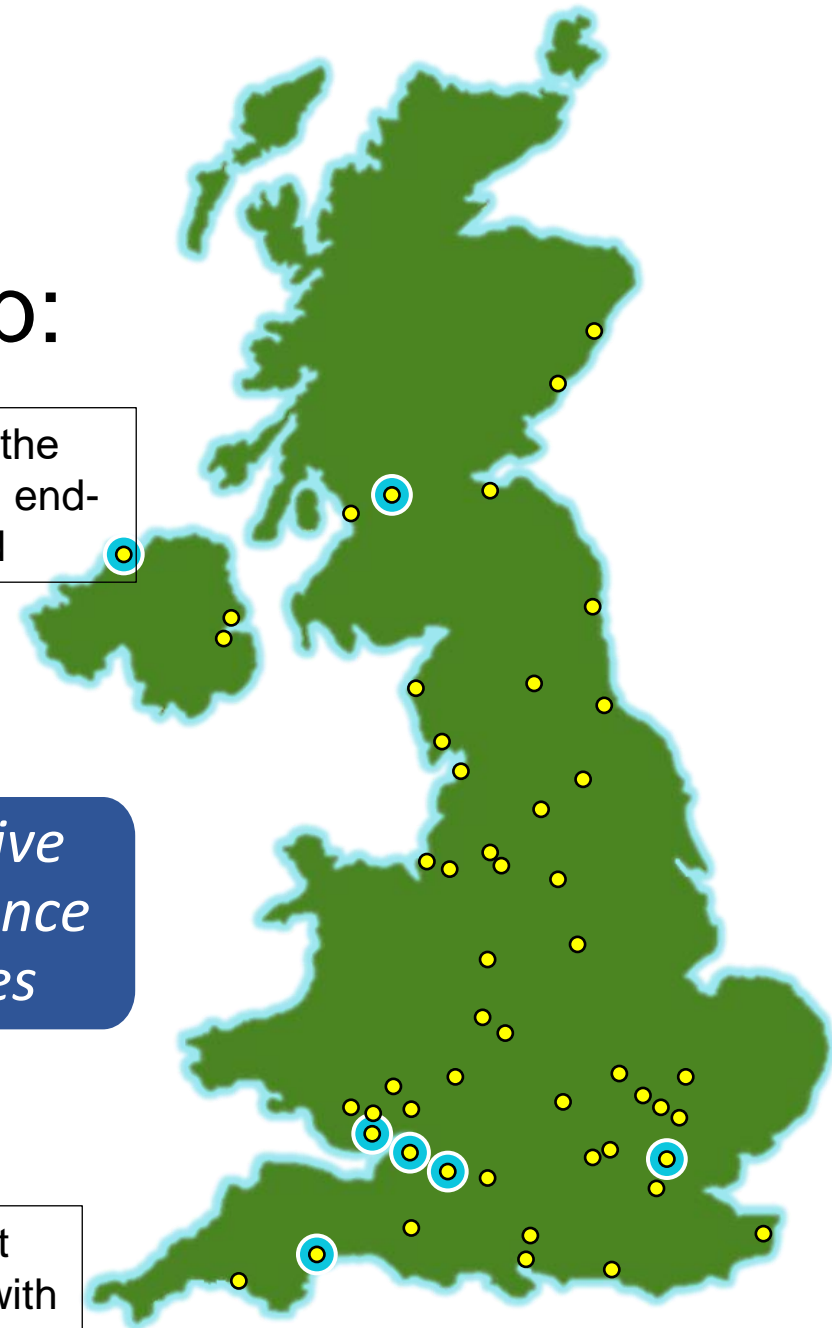
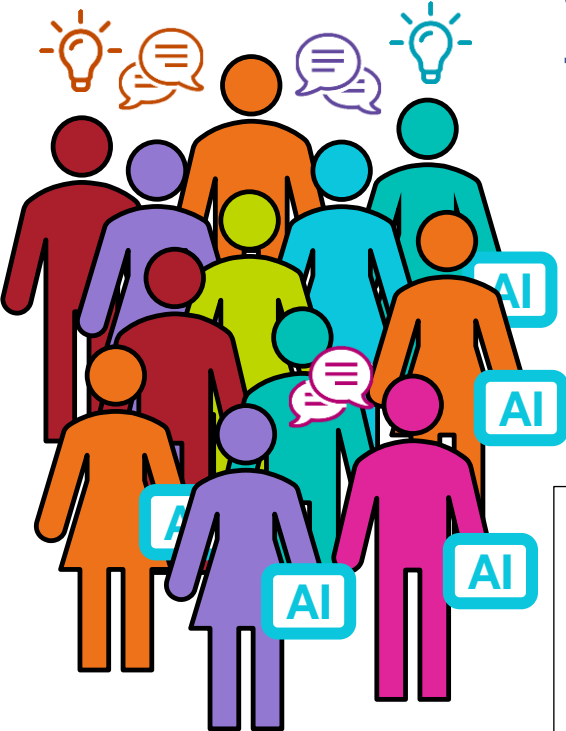
Collective Intelligence Policies

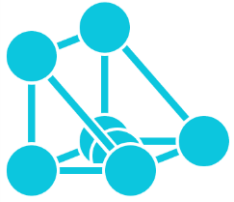
Smart Agents

Inform Behaviour

4. Iterate (based on findings) Smart Agents with end-users in mind

Real World Collective System



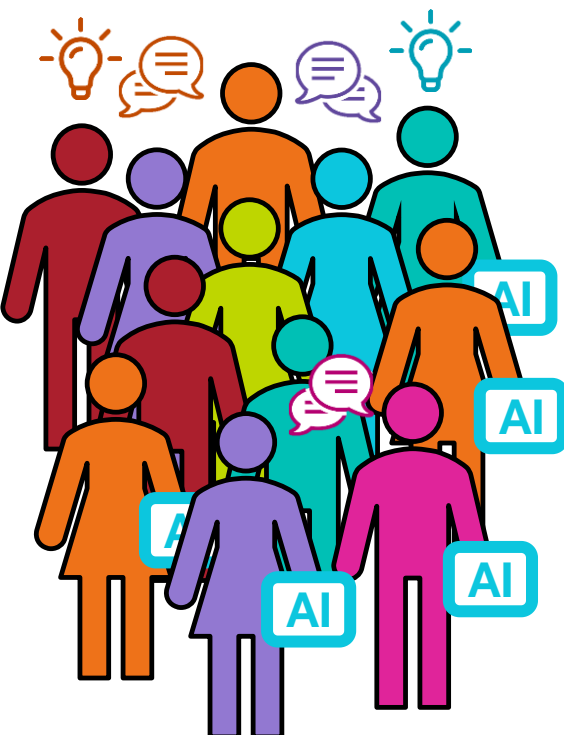
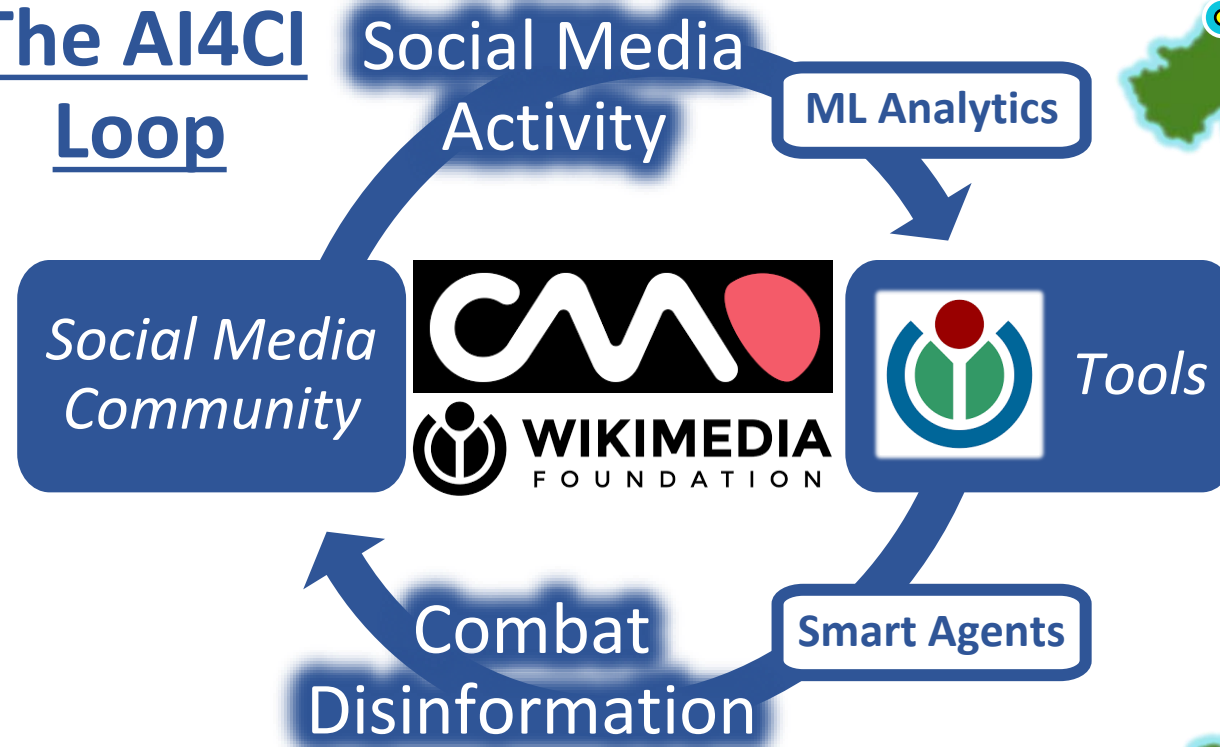


Example: Environment / Climate

- Federated and Privacy-Preserving ML
- Anomaly and Change-Point Detection
- Ensuring Trust and Algorithmic Fairness



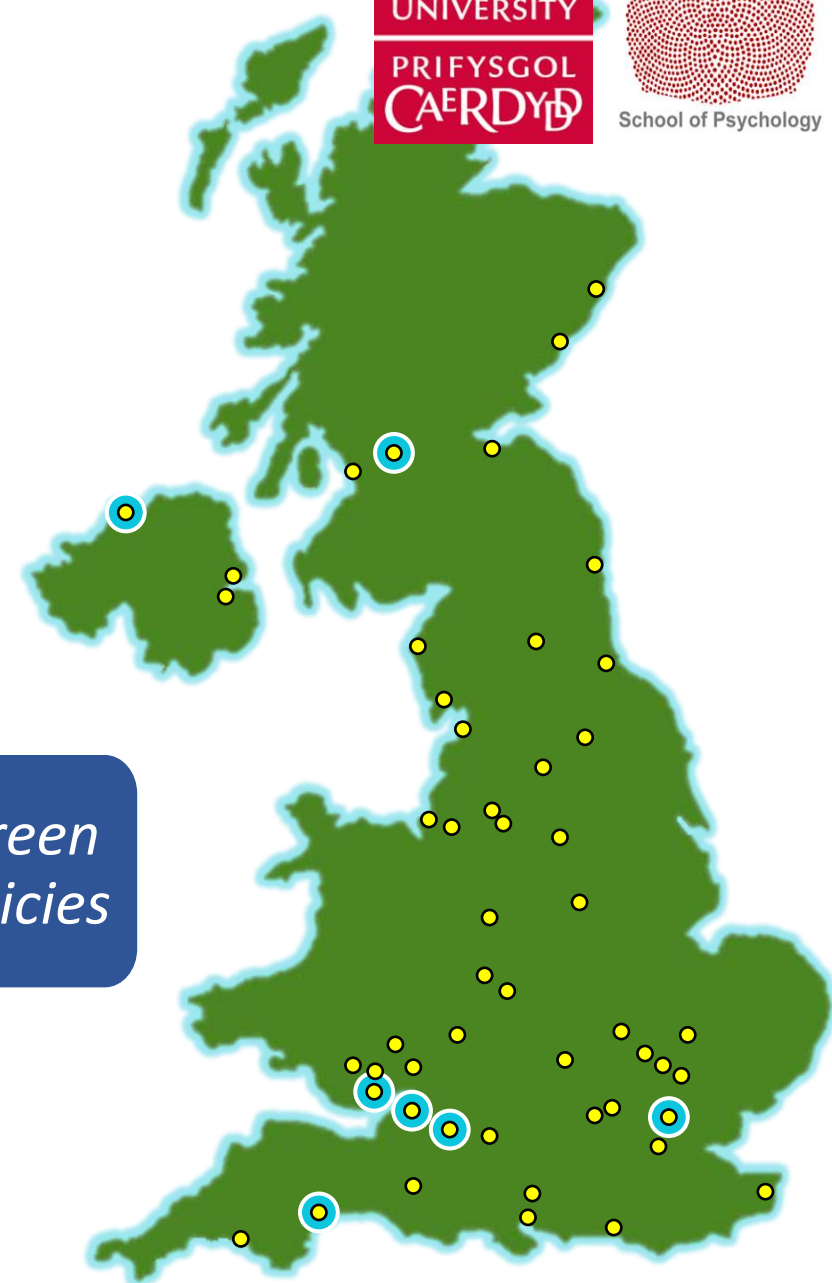
The AI4CI Loop



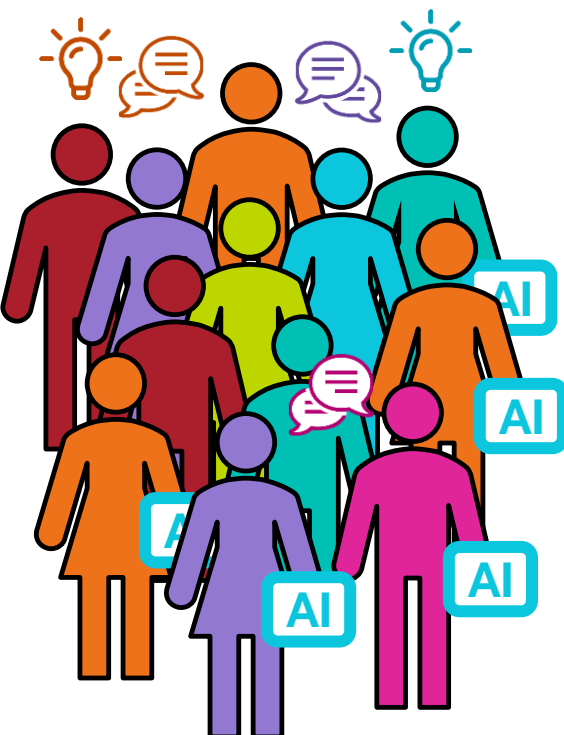


Example: Cities

- Federated and Privacy-Preserving ML
- Anomaly and Change-Point Detection
- Ensuring Trust and Algorithmic Fairness



The AI4CI Loop

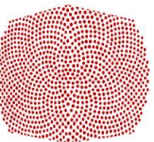


Human-Centered Design

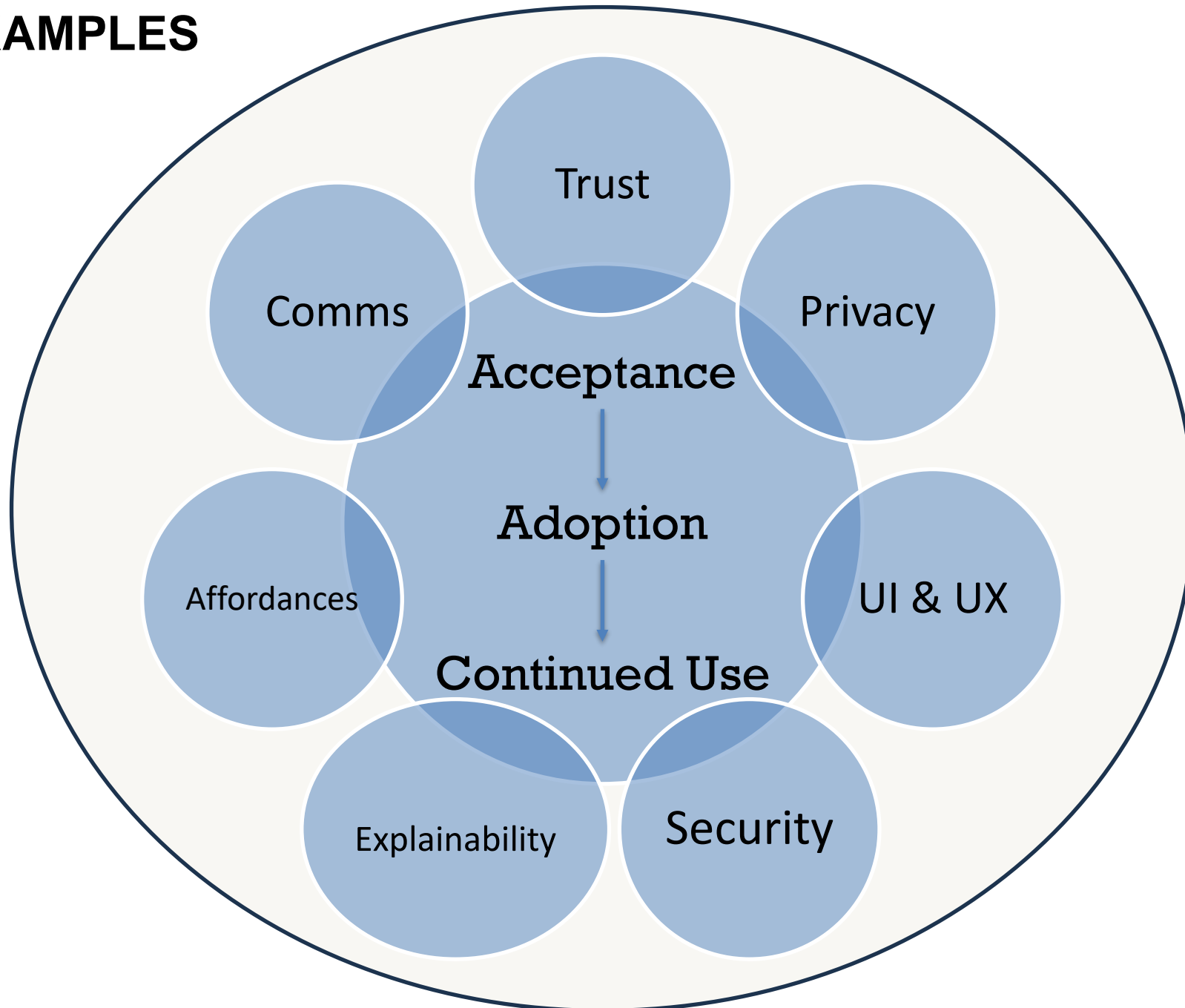
Prof Phil Morgan (Cardiff), Prof Laura Smith (Bath), Dr Sachini Weerawardhana (Bath), Dr Thom Griffith (Cardiff), Jessica Matthews (Cardiff – Placement Student)

Goal: Optimise people in ‘Smart’ collectives

- 1. Review & Participatory Input:** Embed methods & insights (from psych, HF) into smart agent design: reviews; workshops; recommendations; prototypes. Key focus on e.g. trust, accessibility, usability, acceptance, adoption.
- 2. Embed & Test:** Design Smart Agents for optimal outcomes - *people* become integrated & dynamic component of usable & trustworthy Smart collective AI systems.
 - i. Measurement toolkit
 - ii. Calibrate Trust
- 3. Understand:** How Smart agents can affect behaviour changes, at scale. Focus on trust – e.g. thresholds, tipping points, optimisation



EXAMPLES



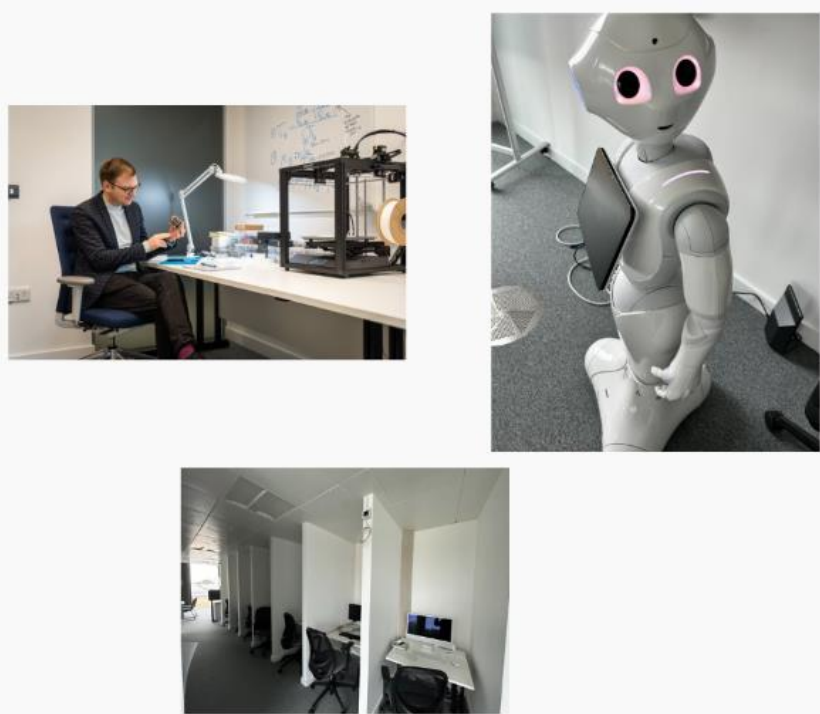
Experiments: Objective & Subjective Measures



Bath



Bath Institute
for Digital Security
and Behaviour



Cardiff: AI, Robotics & Human-Machine Systems - Human Factors Simulation Laboratory



Igloo 6m VR & Ambisonics Cave

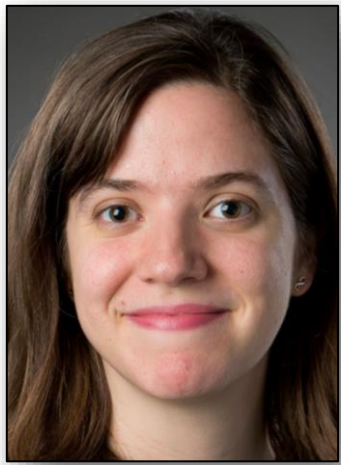
Command & Control Centre

Transport Sim + Motion Platform

Social & Cognitive Robotics

VR, Eye Tracking, EMG, EEG

CyberRith & Virtualizer Platforms



Thank you!
And...AI4CI Global...



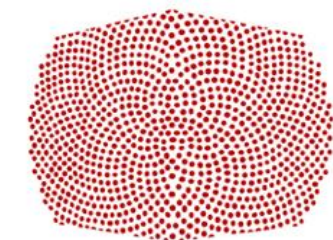
15th Nov 2025 - ENFIELD Webinar 2024

morganphil@cardiff.ac.uk

CARDIFF
UNIVERSITY

PRIFYSGOL
CAERDYDD

How to Build Trust in AI: Human-Centered Design of Trusted AI Smart Agents for Collective Intelligence



School of Psychology

Prof Phil Morgan: Human Factors & Cognitive Science

School of Psychology, Cardiff University, UK

morganphil@cardiff.ac.uk

<https://ai4ci.ac.uk/>



Human Factors Excellence Research Group